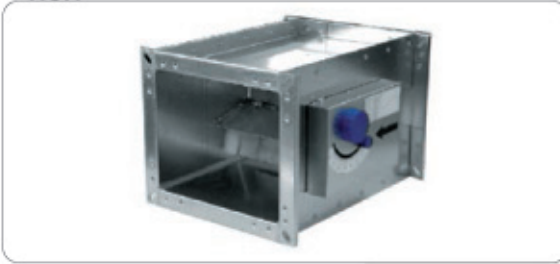


Air flow units

RCR



### Description

- RCR:** rectangular CAV unit
- casing in galvanised steel
  - galvanised steel adjustment blades with system to control the oscillations, stainless steel rotation shafts on special bearings
  - operating range from 50 to 1000 Pa
  - working range from 2 to 8 m/s
  - operating temperatures between -20°C and +70°C
  - tolerance from ± 5% up to ± 15% for low flow rates
  - horizontal or vertical assembly
  - optional easy recalibration on worksite

RCR...I: with insulated casing

### Executions

#### Assembly:

- install a straight section of duct upstream with the same size as the CAV unit and a length equal to 2 ÷ 4 times the largest dimension

### Selection table

Base	Height	V= 3 m/s Min. flow	V= 8 m/s Max flow
200	100	216	576
	200	432	1152
300	100	324	864
	200	648	1728
	300	972	2592
400	100	432	1152
	200	864	2304
	300	1296	3456
	400*	1728	4608
500	200	1080	2880
	300	1620	4320
	400*	2160	5760
600	200	1296	3456
	300	1944	5184
	400*	2592	6912
	500*	3240	8640
	600*	3888	10368

\*: double blade / double control  
 Δp min: operation from 70 Pa

### Dimensions

