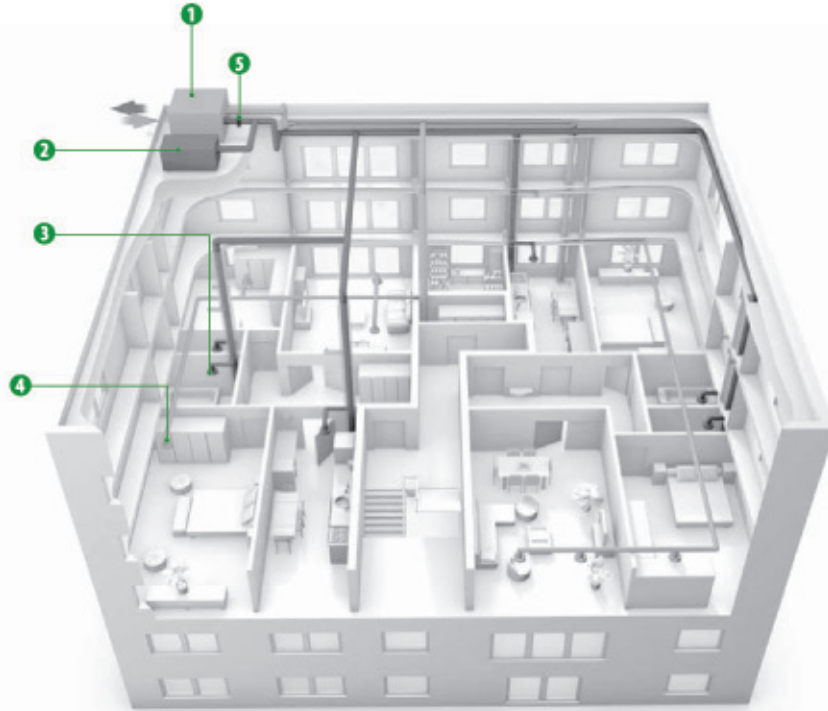


Double centralised flow for condominiums

Key:

1. Dual-flow heat recovery unit
2. Extraction box
3. Extraction valve with constant flow regulator
4. Supply valve with constant flow regulator
5. Fire damper

A high-performance dual-flow heat recovery unit, mounted on the terrace, ensures the intake of fresh air and extraction of stale air for all apartments. In the event of a fire, the fire damper mounted in the intake duct interrupts the flow of air, the limit switch contacts send the information to the heat recovery unit. The fan is switched off and the extraction box is switched on.



Double flow central unit

C4 extraction cabinet

Extraction nozzles:
ALIZE, BDOP + RED flow regulator

Nozzles + intake valves:
BDOP + RED flow regulator

Fire damper

Heat recovery units / VMC / Air treatment

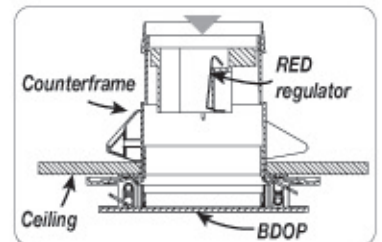
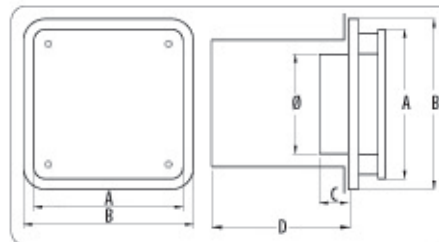
Air inlet valve

BDOP



Dimensions

Type	A	B	C	Ø	D
BDOP 125 (mm)	185	205	30	118	100



Description

BDOP: Air inlet valve for use in homes, collective buildings, tertiary sector (VMC)

- made of white ABS
- DN size 125 mm
- flow rate up to 300 m³/h with 4 throws
- flow rate with constant flow regulator up to 120m³/h
- orientation of adjustable throw
- including plastic subframe for fastening

Operation: air jet orientation in 1, 2, 3 or 4 directions depending on the blade adjustment

