

WKP-P-E-J / WKP-P-E-W



► **VDI 6022** HYGIENIC STANDARD

Description

EI 120 S multiple blade smoke control dampers according to UNI EN 1366-2 e UNI EN 1366-10 (tests for smoke control), UNI EN 13501-4 and UNI EN 12101-8 classification

Performance certificate no. 2434-CPR-0015 issued by the "CTO Gdansk" (The Naval Technology Centre)

CE marking - VDI 6022 hygienic certificate

• Construction: Z275 galvanized steel frame with silicate fibre interposed, 30 mm flanges for ducting connection, counter blade movement, made of silicate fibre and fastened by bolts, intumescent gasket both on the blades and damper frame. Cold smoke sealing gasket

- Vertical installation
- Leakage class C of the frame according to EN 1751
- Max dimension 1200x800
- Frame depth 230 mm

Fitted with:

- with electric on-off actuators, dual microswitches, 24V and 230V power supply

• Installations in ducts and masonry walls (120 mm or 125 mm plasterboard) with fire resistance classes EI 120 or EI 90

WKP-P-E-J

E600 120 (Ved i <-> o) S 1000 C 300 AA SINGLE - (Duct)

WKP-P-E-W

EI 90 (Vew i <-> o) S 1500 C 10'000 AA MULTI

EI 120 (Vew i <-> o) S 1000 C 10'000 AA MULTI

WKP-P-E-J-K 24: with on-off actuator and 2 opening and closing micro limit switches, 24V power supply

WKP-P-E-J-K 230: with on-off actuator and 2 opening and closing limit switches, 230V power supply

WKP-P-E-W-K 24: with on-off actuator and 2 opening and closing micro limit switches, 24V power supply

WKP-P-E-W-K 230: with on-off actuator and 2 opening and closing micro limit switches, 230V power supply

Special execution

KL: left side flange

KR: right side flange

T: without flanges only for version (WKP-P-E-W), frame th. 125 mm

- Additional communication systems (see page 10)

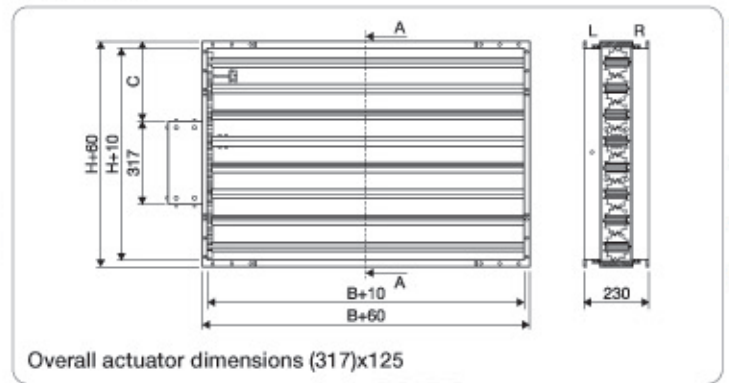
WKP-P-E-J Net area of air passage in m²

| H/L | 200 | 300 | 400 | 500 | 600 | 700 | 800 | 900 | 1000 | 1100 | 1200 |
|-----|------|------|------|------|------|------|------|------|------|------|------|
| 200 | 0.03 | 0.04 | 0.05 | 0.07 | 0.08 | 0.09 | 0.10 | 0.12 | 0.13 | 0.14 | 0.16 |
| 300 | 0.04 | 0.06 | 0.08 | 0.10 | 0.12 | 0.14 | 0.16 | 0.18 | 0.20 | 0.31 | 0.23 |
| 400 | 0.05 | 0.08 | 0.10 | 0.13 | 0.16 | 0.18 | 0.21 | 0.23 | 0.26 | 0.29 | 0.31 |
| 500 | 0.07 | 0.10 | 0.13 | 0.16 | 0.20 | 0.23 | 0.26 | 0.29 | 0.33 | 0.36 | 0.39 |
| 600 | 0.08 | 0.12 | 0.16 | 0.20 | 0.23 | 0.27 | 0.31 | 0.35 | 0.39 | 0.43 | 0.47 |
| 700 | 0.09 | 0.14 | 0.18 | 0.23 | 0.27 | 0.32 | 0.36 | 0.41 | 0.46 | 0.50 | 0.55 |
| 800 | 0.10 | 0.16 | 0.21 | 0.26 | 0.31 | 0.36 | 0.42 | 0.47 | 0.52 | 0.57 | 0.62 |

WKP-P-E-W Net area of air passage in m²

| H/L | 200 | 300 | 400 | 500 | 600 | 700 | 800 | 900 | 1000 | 1100 | 1200 |
|-----|------|------|------|------|------|------|------|------|------|------|------|
| 200 | 0.02 | 0.04 | 0.05 | 0.06 | 0.07 | 0.08 | 0.10 | 0.11 | 0.12 | 0.13 | 0.14 |
| 300 | 0.04 | 0.05 | 0.07 | 0.09 | 0.11 | 0.13 | 0.14 | 0.16 | 0.18 | 0.20 | 0.22 |
| 400 | 0.05 | 0.07 | 0.10 | 0.12 | 0.14 | 0.17 | 0.19 | 0.22 | 0.24 | 0.26 | 0.29 |
| 500 | 0.06 | 0.09 | 0.12 | 0.15 | 0.18 | 0.21 | 0.24 | 0.27 | 0.30 | 0.33 | 0.36 |
| 600 | 0.07 | 0.11 | 0.14 | 0.18 | 0.22 | 0.25 | 0.29 | 0.32 | 0.36 | 0.40 | 0.43 |
| 700 | 0.08 | 0.13 | 0.17 | 0.21 | 0.25 | 0.29 | 0.34 | 0.38 | 0.42 | 0.46 | 0.50 |
| 800 | 0.10 | 0.14 | 0.19 | 0.24 | 0.29 | 0.34 | 0.38 | 0.43 | 0.48 | 0.53 | 0.58 |

Dimensions



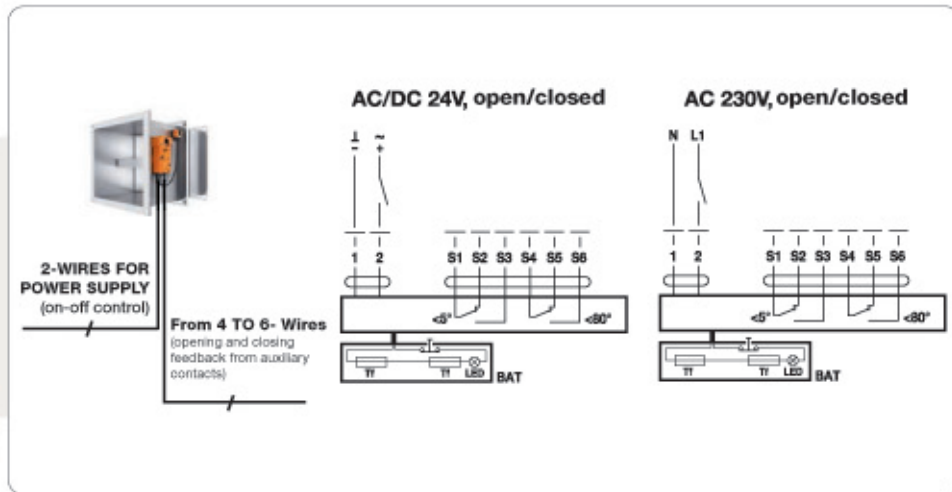
| N | H | C |
|---|-----|-----|
| 2 | 200 | 0 |
| 3 | 300 | 100 |
| 4 | 400 | 100 |
| 5 | 500 | 200 |
| 6 | 600 | 200 |
| 7 | 700 | 300 |
| 8 | 800 | 300 |

N: number of blades
H: damper height

Fire /smoke control damper

Standard actuator

- BFL24-T
- BFN24-T
- BF24-T
- BFL230-T
- BFN230-T
- BF230-T



Control and warning

Actuators:

- All 24V actuators with T-ST extension
- BFL24-T-ST
- BFN24-T-ST
- BF24-T-ST

BKN230-24



Description

- Power supply and communication unit for actuators for 24V fire damper with ST socket
- Built-in status light
- Possible connection to a smoke detector, without additional power supply
- AC 230V power supply

BKS24-1B



Description

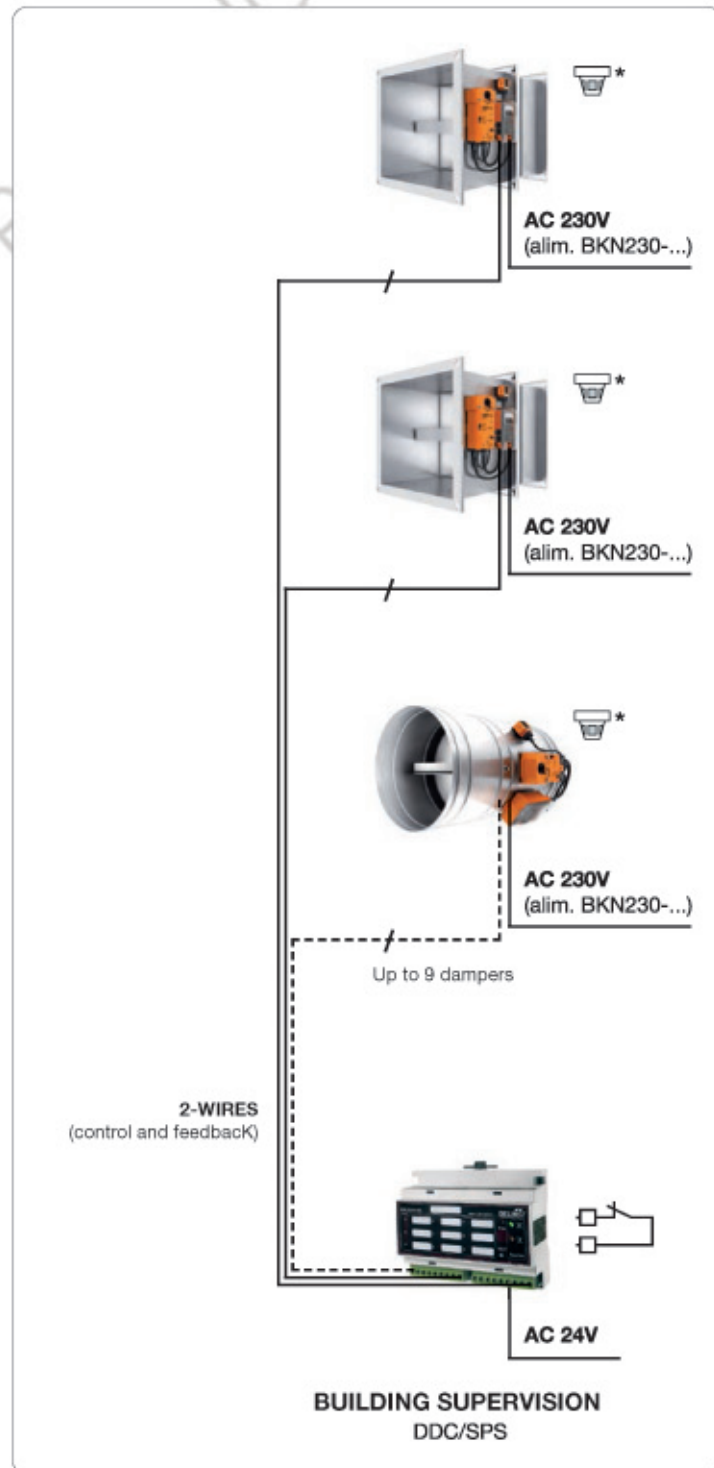
- Communication and control unit for fire damper
- Control and monitoring of 1 damper
- Built-in status light
- ZSO-11 connection base required
- AC 24V power supply

BKS24-9A



Description

- Communication and control unit for fire damper
- Control and monitoring of 9 dampers
- Built-in status light
- Connection plug terminals
- AC 24V power supply





- ▶ **VDI 6022 HYGIENIC STANDARD**
- ▶ **CERTIFICATION FOR ASSEMBLY OUTSIDE THE WALL UP TO 1 METRE**

Description

EI 120 S fire damper according to UNI EN 1366-2 classification UNI EN 13501-3 certificate no. 1438-CPR-0509
CE marking - VDI 6022 hygienic certificate

- Construction: Z275 galvanised steel frame th. 10/10 male coupling for direct insertion into the duct, offset blade in calcium silicate mounted on steel shafts and brass bearings, intumescent gasket and perimeter gasket for tightness against cold fumes
- Vertical or horizontal installation
- Leakage Class B of the frame according to EN 1751

Fitted with:

- **Manual version:** with 72°C thermal fuse, spring return and microswitch
- **Motorised version:** actuators with 72°C thermal fuse, spring return, 24V and 230V dual microswitch

- Installations in walls with fire resistance classes EI 120/90/60 with blade installed in the wall or outside
- Ceilings th. 150 mm
- Low density masonry walls (min. 450 Kg/m³) with th. 115 mm
- Plasterboard walls th. 125 mm
- Outside the wall th. 120 mm up to 1 metre (EI 90S)
- Minimum distance wall or duct 10 mm

EI 120 (ve ho i <-> o) S

KTM (male connection) UP (external gaskets), frame 195 mm, with fuse and spring return

KTM-UP - W: frame 195 mm, with fuse, spring return and micro switch (W1 - W2 - W12)

- **W1:** limit switch on closing
- **W2:** limit switch on opening
- **W12:** limit switch opening and closing

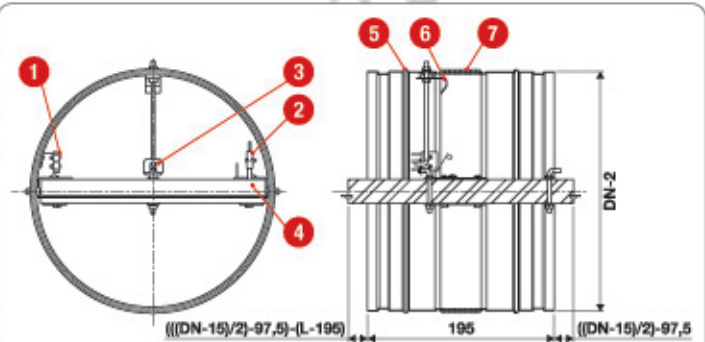
KTM-E24T: with actuator with spring return, thermal fuse and double opening and closing micro limit switch, 24V power supply, male connection, 307 mm frame

KTM-E230T: with servomotor with return spring, thermal fuse and double opening and closing micro limit switch, 230V power supply, male connection, 307 mm frame

Special executions

- Execution in AISI 304/316 stainless steel
- Execution in galvanised steel coated according to the RAL table
- Blade treated with solvent-free, silicate-based impregnating agent, for acidic or very humid environments
- 95°C thermal fuse for motorised version
- Special executions for "cabin/container" metal structures with installation outside the wall
- Additional communication systems (see page 10)

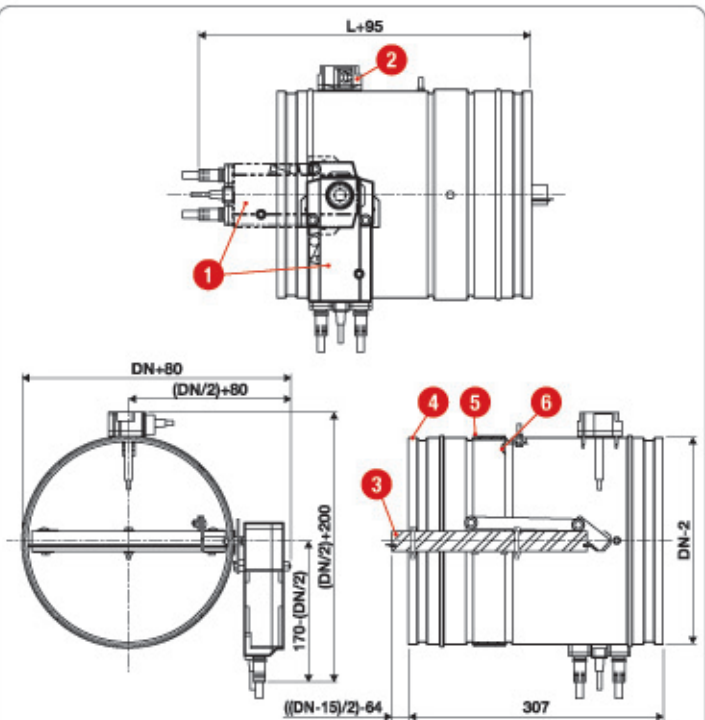
Dimensions KTM



Key:

1. Limit switch (closed blade position)
2. Limit switch (open blade position)
3. Thermal fuse
4. Blade
5. Frame
6. Blade stop
7. Internal and external intumescent gasket

KTM-E dimensions



Key:

1. Electric actuator - horizontal and vertical position
2. Thermo-electric fuse device
3. Blade
4. Frame
5. Internal and external intumescent gasket
6. Blade stop