



- ▶ **VDI 6022 HYGIENIC STANDARD**
- ▶ **CERTIFICATION FOR ASSEMBLY OUTSIDE THE WALL UP TO 1 METRE**

Description

EI 120 S fire damper according to UNI EN 1366-2 classification UNI EN 13501-3 certificate no. 1438-CPR-0509

CE marking - VDI 6022 hygienic certificate

- Construction: Z275 galvanised steel frame th. 10/10 with flanges for connection to the ducting, intermediate thermal break, offset blade in calcium silicate mounted on steel pins and brass bushings, intumescent gasket and perimeter gasket for tightness against cold fumes. Reduced pressure drop
- Vertical or horizontal installation
- Leakage class C of the frame according to EN 1751
- Leakage "Class 3" tests on blade according to EN 1751

Fitted with:

- **Manual version:** with 72°C thermal fuse, spring return and microswitch
- **Motorised version:** actuators with thermal fuse, spring return, 24V and 230V dual microswitch

- Installations in walls with fire resistance classes EI 120/90/60 with blade installed in the wall or outside
- Ceilings th. 140 mm
- Low density masonry walls with th. 100 mm
- Plasterboard walls th. 125 mm
- External to masonry walls with th. 120 mm up to 1 metre (EI 120S)

EI 120 (ve ho i <-> o) S

Max dimension 800x500

KWP-L-S: with thermal fuse and spring return

KWP-L-S W: with thermal fuse, spring return and microswitch (W1 - W2 - W12)

- **W1:** limit switch on closing
- **W2:** limit switch on opening
- **W12:** limit switch opening and closing

KWP-L-E24T: with actuator with spring return, thermal fuse and double opening and closing micro limit switch, 24V power supply

KWP-L-E230T: with actuator with return spring, thermal fuse and double opening and closing micro limit switch, 230V power supply

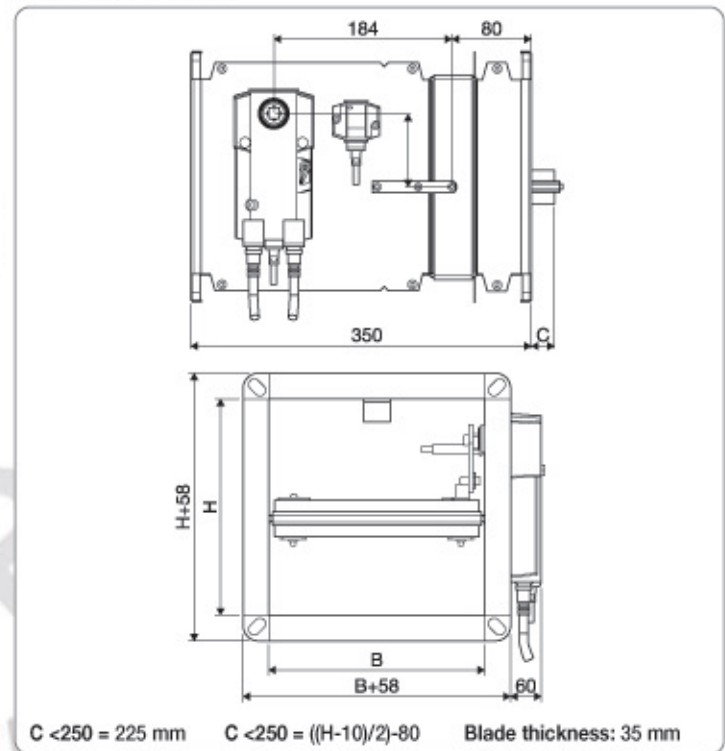
Special executions

- Execution in AISI 304/316 stainless steel
- Execution in galvanised steel coated according to the RAL table
- Blade treated with solvent-free, silicate-based impregnating agent, for acidic or very humid environments
- 95° thermal cut/off for motorised version
- Special execution for "cabin/container" metal structures with installation outside the wall
- Additional communication systems (see page 10)

Pressure drops

V (m/s)	Δp Pa
4	10
6	18
8	30

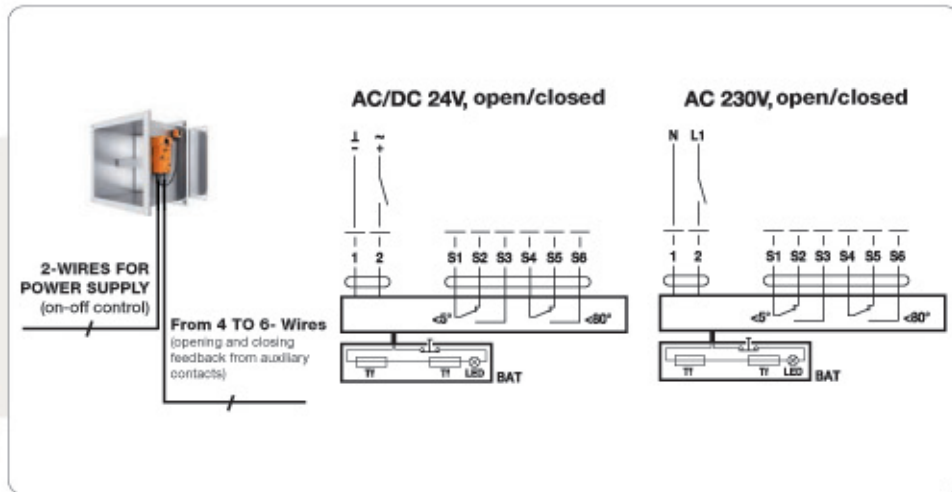
KWP-L dimensions



Fire /smoke control damper

Standard actuator

- BFL24-T
- BFN24-T
- BF24-T
- BFL230-T
- BFN230-T
- BF230-T

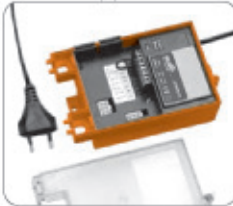


Control and warning

Actuators:

- All 24V actuators with T-ST extension
- BFL24-T-ST
- BFN24-T-ST
- BF24-T-ST

BKN230-24



Description

- Power supply and communication unit for actuators for 24V fire damper with ST socket
- Built-in status light
- Possible connection to a smoke detector, without additional power supply
- AC 230V power supply

BKS24-1B



Description

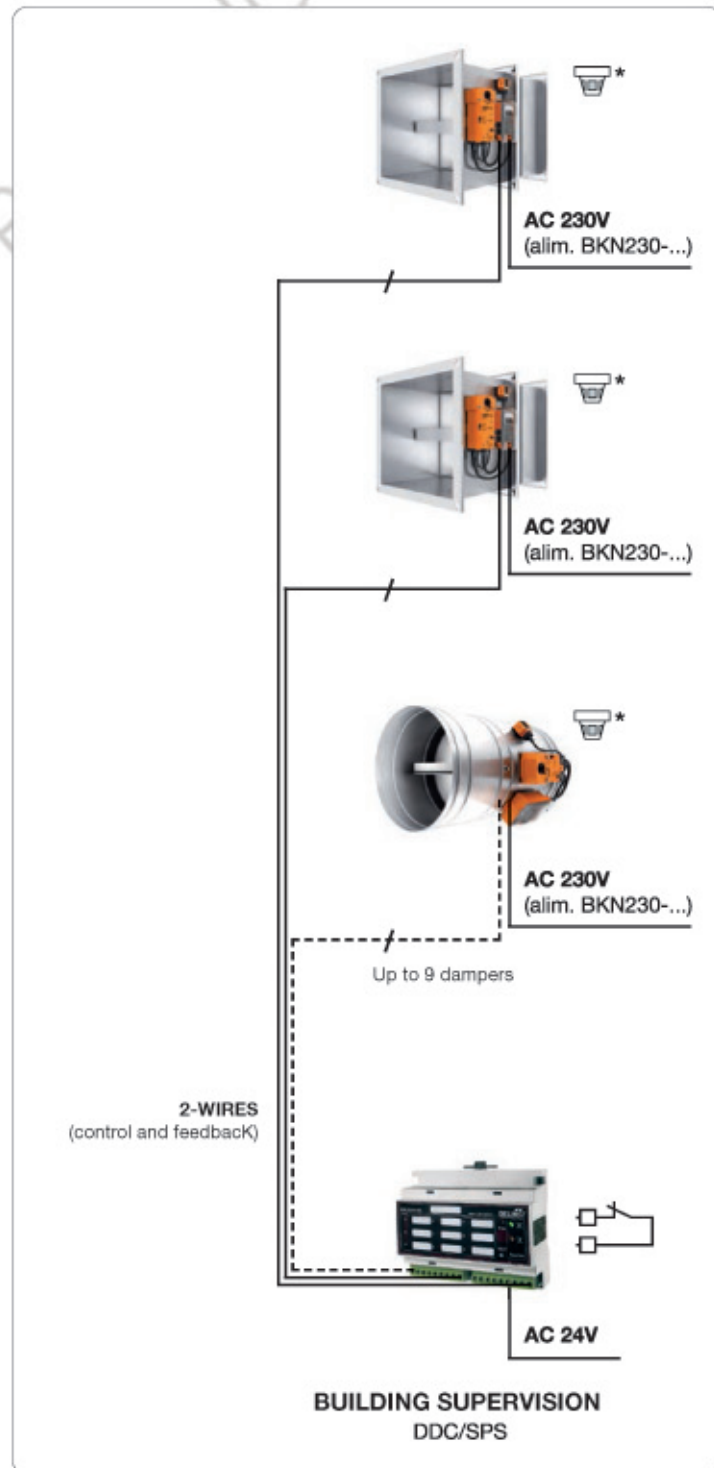
- Communication and control unit for fire damper
- Control and monitoring of 1 damper
- Built-in status light
- ZSO-11 connection base required
- AC 24V power supply

BKS24-9A



Description

- Communication and control unit for fire damper
- Control and monitoring of 9 dampers
- Built-in status light
- Connection plug terminals
- AC 24V power supply





- ▶ **VDI 6022 HYGIENIC STANDARD**
- ▶ **CERTIFICATION FOR ASSEMBLY OUTSIDE THE WALL UP TO 1 METRE**

Description

EI 120 S fire damper according to UNI EN 1366-2 classification UNI EN 13501-3 certificate no. 1438-CPR-0509
CE marking - VDI 6022 hygienic certificate

- Construction: Z275 galvanised steel frame th. 10/10 male coupling for direct insertion into the duct, offset blade in calcium silicate mounted on steel shafts and brass bearings, intumescent gasket and perimeter gasket for tightness against cold fumes
- Vertical or horizontal installation
- Leakage Class B of the frame according to EN 1751

Fitted with:

- **Manual version:** with 72°C thermal fuse, spring return and microswitch
- **Motorised version:** actuators with 72°C thermal fuse, spring return, 24V and 230V dual microswitch

- Installations in walls with fire resistance classes EI 120/90/60 with blade installed in the wall or outside
- Ceilings th. 150 mm
- Low density masonry walls (min. 450 Kg/m³) with th. 115 mm
- Plasterboard walls th. 125 mm
- Outside the wall th. 120 mm up to 1 metre (EI 90S)
- Minimum distance wall or duct 10 mm

EI 120 (ve ho i <-> o) S

KTM (male connection) UP (external gaskets), frame 195 mm, with fuse and spring return

KTM-UP - W: frame 195 mm, with fuse, spring return and micro switch (W1 - W2 - W12)

- **W1:** limit switch on closing
- **W2:** limit switch on opening
- **W12:** limit switch opening and closing

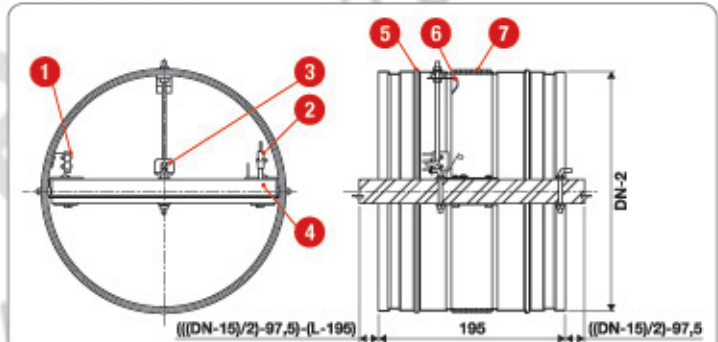
KTM-E24T: with actuator with spring return, thermal fuse and double opening and closing micro limit switch, 24V power supply, male connection, 307 mm frame

KTM-E230T: with servomotor with return spring, thermal fuse and double opening and closing micro limit switch, 230V power supply, male connection, 307 mm frame

Special executions

- Execution in AISI 304/316 stainless steel
- Execution in galvanised steel coated according to the RAL table
- Blade treated with solvent-free, silicate-based impregnating agent, for acidic or very humid environments
- 95°C thermal fuse for motorised version
- Special executions for "cabin/container" metal structures with installation outside the wall
- Additional communication systems (see page 10)

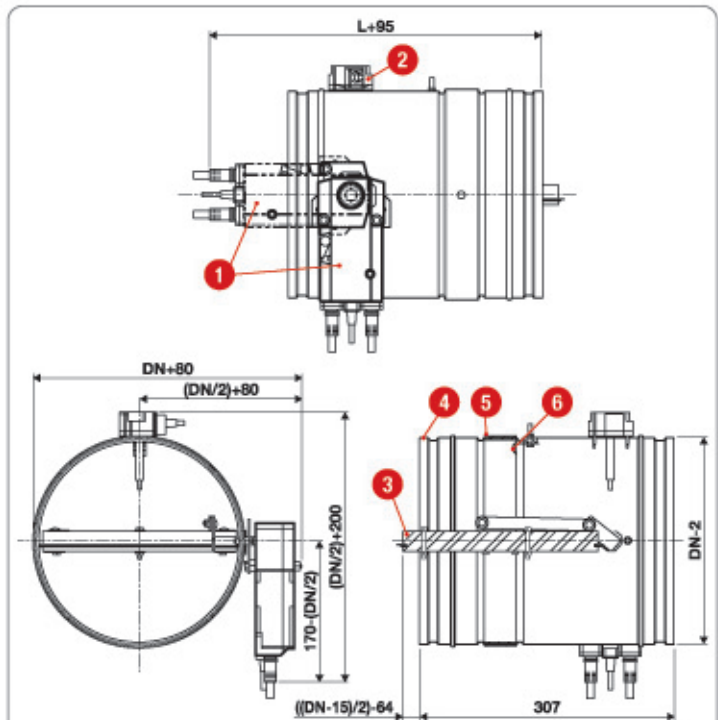
Dimensions KTM



Key:

1. Limit switch (closed blade position)
2. Limit switch (open blade position)
3. Thermal fuse
4. Blade
5. Frame
6. Blade stop
7. Internal and external intumescent gasket

KTM-E dimensions



Key:

1. Electric actuator - horizontal and vertical position
2. Thermo-electric fuse device
3. Blade
4. Frame
5. Internal and external intumescent gasket
6. Blade stop