

Description

- DKO:** diffusers with adjustable nozzle with long throws and reduced noise level
- made of natural aluminium
 - direction for throw varying from 0 to $\pm 30^\circ$
 - maximum operating $\Delta t \pm 12^\circ\text{C}$
 - direct application on rectangular duct with flange
 - aesthetic ring to cover flange

Accessories

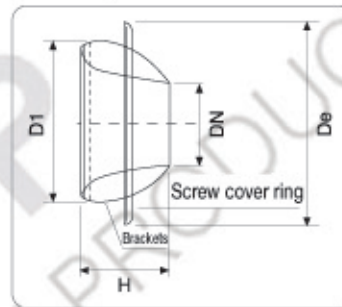
- C:** aesthetic ring to cover flange fastening (for DK)
DR: fitting for circular duct
DF: fitting for flexible pipe
R1: with proportional actuator 0-10V, 24V (on request)
R2: with on-off actuator, 24V (on request)
R3: with on-off actuator, 220V (on request)
RL: throw reducer (about 30% reduction)
DKO-ATS: thermostatic actuator

Special versions

- DK:** version with inner tapered body, without covering ring
W: RAL 9010 coating (list price +20%)
VR: coating according to RAL 9005 / 9006 table
 fixed surcharge €30 + 20% per piece
Other RAL colours on request
- LpA: sound level pressure with 4 dB(A) of room attenuation
 Throw: throw length corresponding to an ambient velocity of 0.2 m/s in isothermal function.

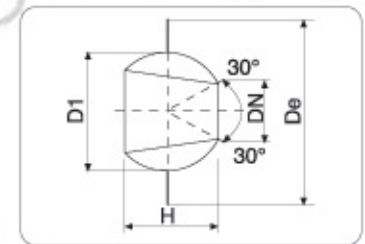
DKO dimensions

DN	De	D1	H
150	410	330	161
200	510	412	194
250	610	532	250



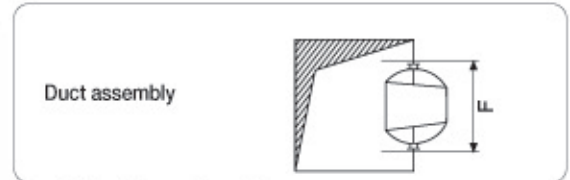
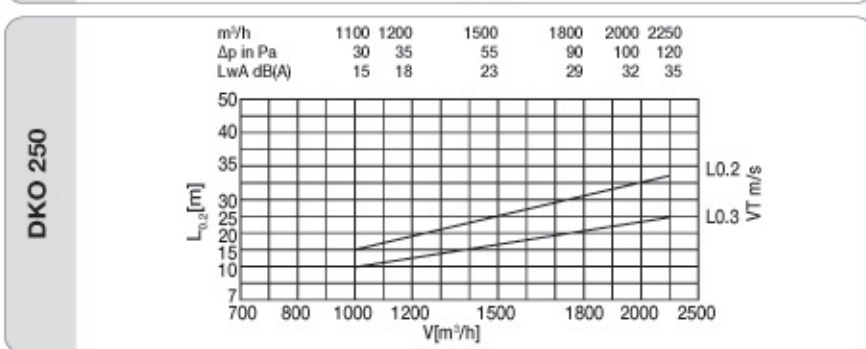
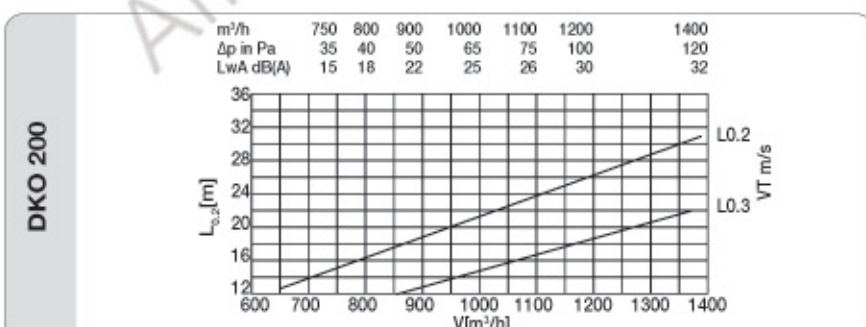
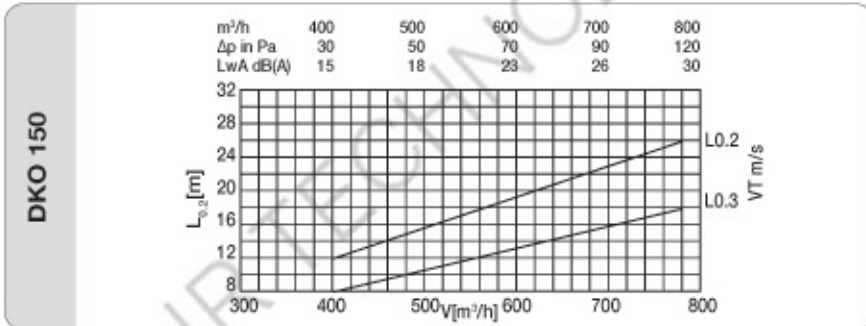
DK dimensions

DN	De	D1	H
40	135	80	56
50	166	102	78
80	254	180	131
120	334	260	221
150	387	300	233
200	485	400	308



DK rapid selection

DN	m ³ /h	Pa	Noise Lp(A) dB(A)	Throw (m)
40	20-50	15-120	18-28	5-12
50	30-90	15-130	15-30	5-12
80	70-220	10-100	16-38	6-20
120	200-480	15-105	18-40	8-24



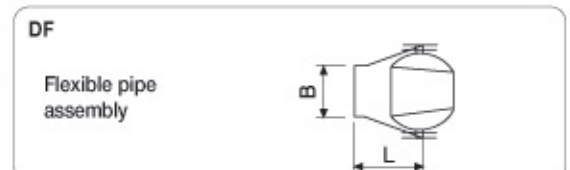
Duct hole dimensions (F)

Type \ DN	150	200	250
DK	354	452	-
DKO - DKE	338	420	540



Dimensions of circular duct assembly

DN	150	200	250
A	300	350	350
Ø duct	500-800	500-1000	500-1000



Fitting dimensions for flexible pipe

DN	150	200	250
B	298	398	398
L	350	350	350

Noise correction factor for throw with angle $\alpha = 30^\circ$

DN	40	50	80	120	150	200	250
correction	+2	+2	+4	+4	+4	+3	+3